



Knowsley Council

Dear Parent,

I am writing to make you aware that cases of measles have been rising in England this year.

Measles infection can be a serious illness which can spread very easily, and it is of particular concern in Knowsley due to low Measles Mumps and Rubella (MMR) vaccination rates.

MMR vaccination is proven to be safe, and extremely effective in protecting against measles infection. Recent UK Health Security Agency (UKHSA) research suggests Knowsley could be facing a measles outbreak unless MMR vaccination rates improve.

When does my child have the MMR vaccine?

The first MMR vaccine is given to toddlers at the age of 13 months and the second injection at around 3 years and 4 months before your child goes to school.

MMR can be given to older children, teenagers, and young adults if they missed their injections when they were younger.

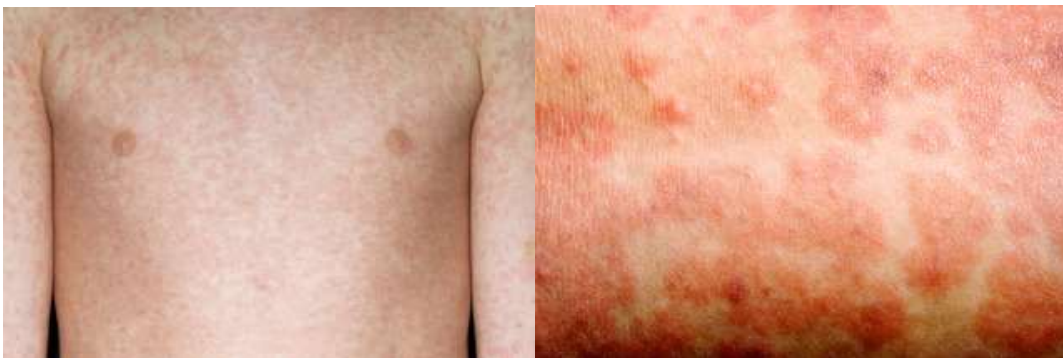
Contact your GP practice if your child needs an MMR vaccine. The vaccine is free. If you are not sure if your child needs an MMR vaccine, you can contact your GP to ask.

What are the symptoms of measles and who can get it?

Measles is not just a little kids' problem. Teenagers, young adults, and anyone who has missed their MMR vaccination can get measles.

The first signs of measles are:

- Cough, runny nose, and red sore eyes.
- After a few days, a spotty rash appears. It starts on the face and neck and spreads to the rest of the body. The rash may be harder to detect on black or brown skin:



What do I do if I think child has measles?

If you think your child has measles, ring your GP practice for advice.

Don't turn up to the surgery, walk in centre or to Accident and Emergency without calling ahead. The doctor will make special arrangements to see your child to prevent them passing it on to others.

Keep people with symptoms of measles away from others to avoid spreading measles, and stay away from school, nursery, or work for 5 days after the onset of rash.

Where to find out more advice and information

If you would like more information, visit www.nhs.uk/conditions/measles or www.nhs.uk/conditions/vaccinations/mmr-vaccine/

Yours sincerely,



Dr. Sarah McNulty
Assistant Executive Director,
Public Health



Nadine Carroll
Assistant Executive Director,
Education and Inclusion (Interim)