

Travel and Tourism Knowledge Organiser

Unit 2: UK Travel and Tourism Destinations Learning Aim A

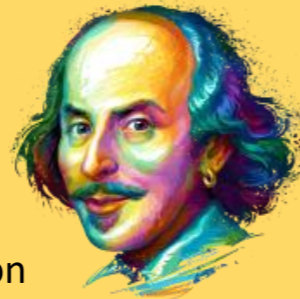
Seaside Resorts

Blackpool
 Cromer
 Scarborough
 Whitby
 Margate
 Weston Super Mare
 St Ives
 Ayr
 Portrush
 Broadstairs
 Brancaster
 Hunstanton
 Brighton
 Southend on Sea
 Newquay
 Minehead



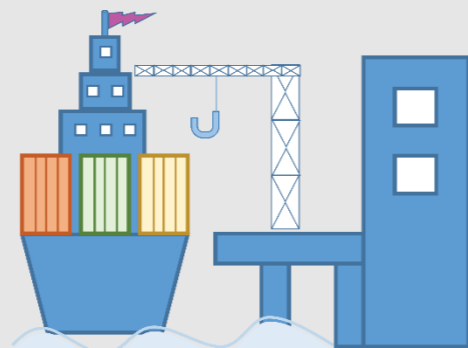
Historical and Cultural Destinations

Bath
 York
 Edinburgh
 Glasgow
 London
 Stratford upon Avon
 Portsmouth
 Londonderry
 Liverpool
 Manchester
 Oxford
 Cambridge



Seaports

Felixstowe
 Harwich
 Newhaven
 Dover
 Portsmouth
 Poole
 Swansea
 Hull
 Ullapool
 Stornoway
 Uig
 Lewrick
 Larne
 Belfast



Countries of the UK

England
 Scotland
 Wales
 Northern Ireland
 (Republic of Ireland)

Capital Cities

London
 Edinburgh
 Cardiff
 Belfast
 (Dublin)



UK Airports (+ IATA Codes)

London Gatwick LGW
 London Stansted STN
 London Heathrow LHR
 Bristol BRS
 London Luton LTN
 Manchester MAN
 Birmingham BHX
 East Midlands EMA
 Newcastle NCL
 Edinburgh EDI
 Belfast City BHD
 Isle of Man IOM
 Aberdeen ABZ
 Teesside MME
 Southampton SOU
 Liverpool John Lennon LPL



Countryside Areas

Lake District
 Peak District
 Pennines
 The Cotswolds
 Snowdonia
 Loch Lomond and the Trossachs
 New Forest
 South Downs
 Exmoor
 Dartmoor
 Norfolk Broads
 The Cairngorms
 Mourne
 Yorkshire Dales
 North York Moors



Rail Lines

East Coast Main Line- London Kings Cross St Pancras to Edinburgh
 West Coast Main Line- London Euston to Glasgow
 Midlands Main Line- London St Pancras to Manchester Piccadilly
 High Speed 1 (HS1)- London St Pancras to Paris Gare du Nord



Motorways (Major)

M62- Leeds to Manchester
 M1- London to Edinburgh
 M25- London Orbital
 M4- London to Cardiff
 A47- Norwich to Leicester
 A46- Grimsby to Leicester
 A9- Dundee to Thurso



Use this knowledge organiser to help you plan your coursework. There are many more places that you could add to your maps to help you. Good luck!